



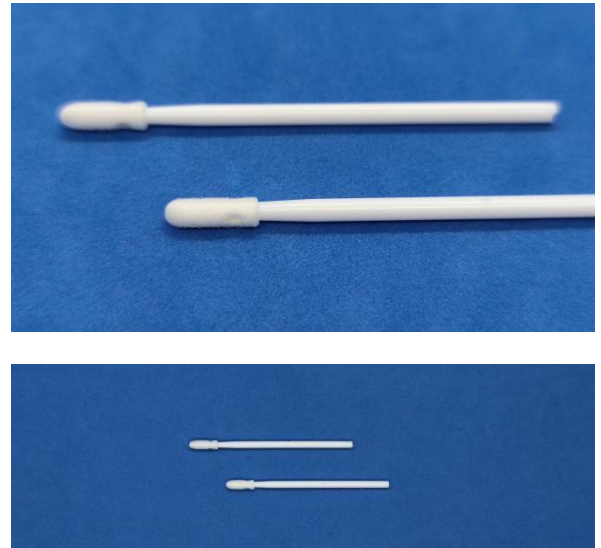
Disposable Sampling Swab

Product Description

96000E is a Foam Sampling Swab used for cell & virus specimen collection, and it has been designed for Nasopharyngeal clinical diagnostics. This specialty applicator is tipped with 100ppi medical grade polyurethane foam. It is bonded securely to a PP handle that snaps when bent at a 90° angle. It has been well recognized and adopted by the diagnostic test kit manufacturers who produce reagents in molecular genetics, forensics and clinical laboratories sectors.

Product Features

- Medical grade quality
- Excellent collection and release properties
- Soft foam tip for patient comfort
- Used dry or with media
- Made in China



Product Specifications

Item No.	Dimension of foam tip			Dimension of POM handle			
	Width	Thickness	Length	Diameter 1	Diameter 2	Breakpoint	Total length
96000E	3.6±0.5mm	3.6±0.5mm	11±3mm	4 mm	Taper to 2.5	N/A	70±15mm
Packaging				100 pcs/bag, 50 bags/ctn, 5000 pcs/ctn			
Sterilization method				Ethylene oxide sterilization			
Ethylene oxide residue				≤10µg/g			
Best storage conditions				4°C— 30°C			
Quality guarantee period				3 years			



Disposable Sampling Swab

Directions

Step 1: Put the tip of swab into nose.

Step 2: Squeeze with your nose for about 1 minute to allow the swab to completely absorb sampling.

Step 3: Put the swab on test machine.



Miracle Technology Co.,Ltd.

Address: Room 301, Building A, No.18, Rongshuxia Industrial Zone, Tongxin Community, Baolong Street, Longgang District, Shenzhen, China, 518116

Tel: +86-0755- 89616773 Fax: +86-755-89616775

Web: www.mantacc.com



Share Info Consultant Service LLC Repräsentanzbüro

Address: Heerdter Lohweg 83, 40549 Düsseldorf

Tel: 0049 1767 0057022

Fax: 0049 1767 0057022

Emai: info@share-info.cn

DIMDI NO.: DE/0000047946

CE Logo

